

Attention!

**You must format the
Piccolo before using
it for the first time.**

**See the reverse side of this
sheet for instructions.**

Attention!

**You must format the
Piccolo before using
it for the first time.**

**See the reverse side of this
sheet for instructions.**

Formatting Instructions for Mac OS Users

The Piccolo may be formatted as either a DOS or Mac OS volume; you may format it differently if your needs change. Please remember, *when you format the Piccolo, all the contained data is erased.*

- If you plan to use the Piccolo only with Mac® OS computers, *format it as a Mac OS volume for best performance.*
- If you intend to use the Piccolo with a Windows® computer as well as your Mac, format it as a DOS volume.

Initial Formatting: Mac OS 8.6–9.x

When the Piccolo is first plugged in, a dialog appears asking you to initialize (format) the Piccolo (Figure 1). Name your Piccolo, select a format, then click Initialize; your Piccolo is now ready to use.

Initial Formatting: Mac OS X

1. When the Piccolo is first plugged in, a dialog appears asking you to initialize (format) the Piccolo (Figure 2); click initialize.
2. The Disk Utility application will open. Click on the Erase tab.
3. Click on the icon for the Piccolo; there will be no triangle next to it. Choose a Volume Format, name your Piccolo, then click Erase; your Piccolo is now ready to use.



Figure 1



Figure 2

Formatting Instructions for Windows Users

Before attempting to copy or save files to the Piccolo, you must format it as a DOS volume. Please remember, *when you format the Piccolo, all the contained data is erased.*

- If your computer is running Windows 98 or Windows 98 SE, you must install driver software before attempting to format the Piccolo. Refer to the information in the Piccolo User Guide on how to download and install the drivers.

Initial Formatting: Windows, All Compatible Versions

1. When the Piccolo is first plugged in, the Windows operating system assigns the Piccolo a drive letter. Open My Computer and click on the Piccolo to select it (Figure 3).
2. Right-click on the Piccolo and select Format from the drop-down menu (Figure 4).
3. When the *Format* window appears (Figure 5), select the Full format option under Format type, then click Start. After formatting is complete, your Piccolo is ready for use.



Figure 3

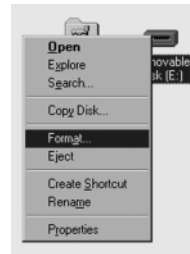


Figure 4

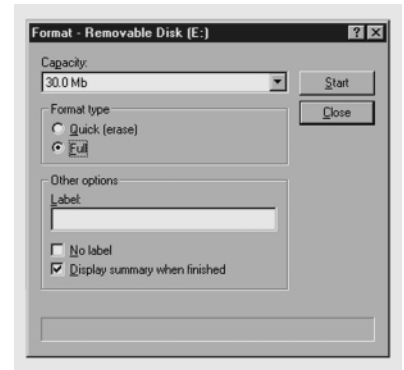
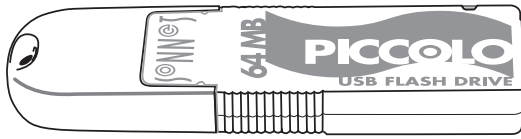


Figure 5



User's Guide



Getting Started

This section describes the physical aspects of the Piccolo.

- **Protective cap** - Remove the cap to plug in the Piccolo, snap it back in place when you unplug the Piccolo (**Figure 1**).
- **Status indicator** - Lights or flashes to indicate operating status:
LED on or flashing slowly - The Piccolo is powered and recognized by your computer.
LED flashing quickly - Your computer is reading data from, or writing data to the Piccolo (**Figure 1**). **Note:** While the status indicator is flashing quickly, do not unplug the Piccolo; it is in use.

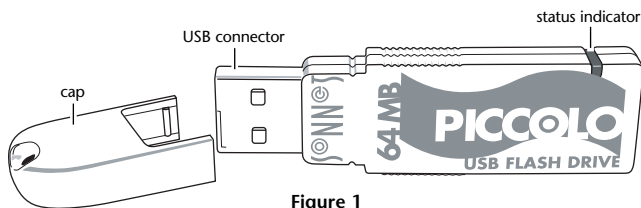


Figure 1

- **USB connector** - Plug into a USB port or extension cable connector (**Figures 1 and 2**).
- **Write protect switch** - Move the switch to the locked position to prevent data writing or erasure (**Figure 3**).

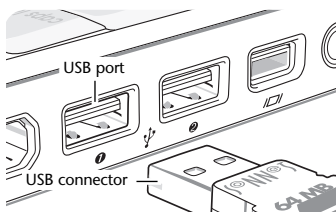


Figure 2

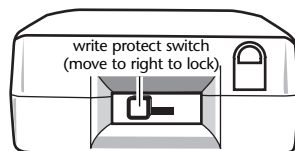


Figure 3

2

Introduction

This user guide explains how to properly use and care for the Piccolo™ USB flash drive with your USB port-equipped computer.

The Piccolo is a cross-platform, self-contained, flash memory drive for use with your Macintosh® computer or Windows® PC; your computer identifies it as a removable media drive. The Piccolo comes unformatted; Mac users may format it either as a Macintosh or DOS drive.

Compatibility

At this printing, Piccolo may be used with any Mac® or Windows OS computer with a USB 1.1 port, that meets the following requirements:

- **Macintosh Computer Requirements:**
Power Macintosh, Macintosh clone, PowerBook®, iBook®, or iMac® computer running Mac OS 8.6* through Mac OS X Version 10.1.3.
- **PC Requirements:**
IBM PC/AT or compatible desktop/notebook/sub-notebook/laptop computer with 100 MHz Pentium® (or equivalent) or better running Windows 98®, Windows 98 SE (Second Edition)†, Windows Me (Millennium Edition), Windows 2000, or Windows XP.

Visit Our Web Site

For the most current software updates and online support files, visit the Sonnet web site at www.sonnettech.com. Remember to register your product online at <http://registration.sonnettech.com> to be informed of future upgrades and product releases.

* If your system is running Mac OS 8.6, you may need to install additional software for Piccolo to operate. Go to www.sonnettech.com/support/piccolo to get the software.

† Windows 98/Windows 98 SE require driver software for Piccolo to operate in your system. Download the driver from our website at www.sonnettech.com/support/piccolo.

1

Using the Piccolo With Mac OS X

The Piccolo is supported natively under Mac OS X; no drivers are required. Just plug it into a USB port, and start working.

- **Mount** - When the Piccolo is plugged in, it mounts to the desktop and appears as a removable media device (**Figure 4**).
- **Use** - Use the Piccolo like a removable media drive. Access it from the desktop and from within applications.
- **Eject** - Drag the Piccolo to the Eject icon in the dock to unmount it; alternately, with the Piccolo selected, you may press ⌘ + E on your keyboard. (**Figure 5**).



Figure 4



Figure 5

Notes

- Always remember to “eject” the Piccolo before unplugging it to prevent data loss or corruption.
- When you delete files from the Piccolo (drag them to the trash), remember to empty the trash by selecting Empty trash... from the Finder Menu. Otherwise, the files remain in the Trash folder on the Piccolo and occupy “disk” space.
- If the Piccolo does not mount after you plug it in (or while plugged in when your system boots), unplug it, then plug it back into the USB port; it should mount.

3

Using the Piccolo With Mac OS 8.6 through 9.x

Piccolo is supported natively under Mac OS 8.6* through 9.x; no drivers are required. Just plug it into a USB port, and start working.

- **Mount** - When the Piccolo is plugged in, it mounts to the desktop and appears as a removable media device (Figure 6).
- **Use** - Use the Piccolo like a removable media drive. Access it from the desktop and from within applications.
- **Eject** - Drag the Piccolo to the Trash on the desktop to unmount it; alternately, with the Piccolo selected, you may press $\text{⌘} + \text{E}$ on your keyboard (Figure 7).

Notes

- Always remember to “eject” the Piccolo before unplugging it to prevent data loss or corruption.
- When you delete files from the Piccolo (drag them to the trash), remember to empty the trash by selecting Special: Empty trash... from the Apple Menu. Otherwise, the files remain in the Trash folder on the Piccolo and occupy “disk” space.
- If the Piccolo does not mount after you plug it in, or while plugged in when your system boots, unplug it, then plug it back into the USB port; it should mount.

* If your system is running Mac OS 8.6, you may need to install additional software for Piccolo to operate. Go to www.sonnettech.com/support/piccolo to get the software.



Figure 6

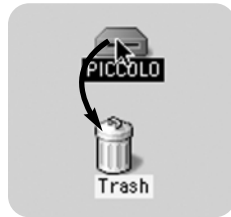


Figure 7

4

Specifications

Item	Description
Supported Operating Systems	Mac® OS 8.6 through OS X Version 10.1; Windows® 98/98 SE/2000/Me/XP
Power Supply	USB bus-powered (4.5V to 5.5V)
Memory Size (MB)	32/64/128/256 (±5%)
Host Interface	Universal Serial Bus, USB Spec. 1.1 UHCI (Universal Host Controller Interface) OHCI (Open Host Controller Interface)
Operating Current	< 40mA
Suspend Current	< 300µA, compliant to USB spec. of < 500µA
Data Retention	10 years
Write Protection	Write protect switch
Status Indicator	LED on or flashing slowly: Piccolo™ connected/enumerated LED flashing quickly: data receiving/transmitting
Data Reading (Piccolo to Host)	700kbytes/s (depending on computer)
Data Writing (Host to Piccolo)	350kbytes/s (depending on computer)
Operating Temperature	0° C ~ +50° C
Storage Temperature	-20° C ~ +80° C
Rel. Humidity Under Operation (Non-Condensation)	20% ~ 80%
Rel. Humidity Under Storage (Non-Condensation)	5% ~ 95%
Dimensions (L x W x H)	64mm x 18mm x 8mm
Weight	12g (approx.)
EMI Compliance	FCC Class B, CE

6

Using the Piccolo With Windows

The Piccolo is supported natively under Windows Me, Windows 2000, and Windows XP; no drivers are required—just plug it into a USB port and start working. Under Windows 98/Windows 98 SE, you must download and install a driver* prior to using the Piccolo.

- **Detection** - After the Piccolo is plugged in, it is automatically detected by your computer and assigned a drive letter. (Figure 8).
- **Use** - Use the Piccolo like a removable disk. Access it from My Computer and from within applications.
- **Eject** - Open My Computer, right-click on the Piccolo, drop down through the menu and select Eject (Figure 9). Users of Windows Me, 2000, or XP may also left-click on the eject icon on the taskbar, then select the Piccolo (Figure 10).

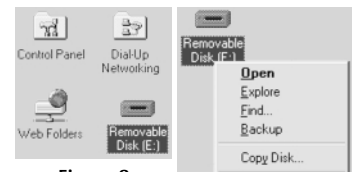


Figure 8

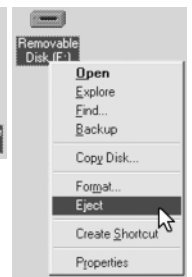


Figure 9



Figure 10

Notes

- Always remember to “eject” the Piccolo before unplugging it to prevent data loss or corruption.
- If the Piccolo does not appear in My Computer, press the F5 key on your keyboard to refresh the screen. If after refreshing the system the Piccolo still does not appear, unplug it, then plug it back into the USB port; it should appear.

* Windows 98/Windows 98 SE require driver software for Piccolo to operate in your system. Download the driver from our website at www.sonnettech.com/support/piccolo.

5

Limited Warranty

Sonnet Technologies, Inc. warrants that its product(s) shall be free from defects in materials and workmanship for a period of three years following the date of original purchase. Sonnet's liability under this warranty shall be limited, at its option, to repairing or replacing product(s) shown to be defective either in materials or workmanship. The sole and exclusive remedy under this warranty shall be such repair or replacement.

A claim of defective materials or workmanship in product(s) shall be allowed only when it is submitted to Sonnet within the warranty period. No claim shall be allowed in respect to product(s) which have been altered, neglected, damaged or stored in any manner which adversely affects them. No product(s) shall be returned to Sonnet for any reason without a return authorization from Sonnet. You bear the responsibility for shipping product(s) to Sonnet within 30 days of authorization and paying for associated shipping and insurance costs. Sonnet will pay the cost to ship repaired or replaced product(s) back to you.

This warranty shall also apply to product(s) that replace defective product(s) but only for the original warranty period. The warranty period shall not be extended by reason of defect, or any period of time during which the product(s) are not available to you because of defects, without the express written consent of Sonnet.

EXCEPT FOR THE EXPRESS WARRANTY AGAINST DEFECTS IN MATERIALS AND WORKMANSHIP CONTAINED HEREIN, SONNET MAKES NO WARRANTY OF ANY KIND WHATSOEVER, EXPRESS OR IMPLIED, AND ALL WARRANTIES OF MERCHANTABILITY AND FITNESS FOR A PARTICULAR PURPOSE ARE HEREBY DISCLAIMED BY SONNET. Without limitation of the foregoing, Sonnet expressly disclaims any liability whatsoever for any damages incurred, directly or indirectly, in connection with its product(s), including without limitation, loss of profits and special, incidental or consequential damages, whether caused by Sonnet's negligence or otherwise.

Contacting Customer Service

The Sonnet website located at www.sonnettech.com has the most current support information and technical updates.

Before you call Sonnet Customer Service, please check our website for the latest updates and online support files, and check your user's guide for helpful information. When you call Sonnet Customer Service, have the following information available so our customer service staff can better assist you:

- Product name
- Date and place of purchase
- Computer type and model
- Operating system and version

If further assistance is needed, please contact us at:

Website: www.sonnettech.com
 Sonnet Customer Service: Tel: 1-949-472-2772
 (Monday–Friday, 8 am–5 pm Pacific Time)
 Fax: 1-949-457-6350
 E-mail: support@sonnettech.com

7