

# Podfreq™ nano

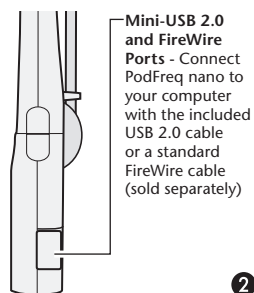
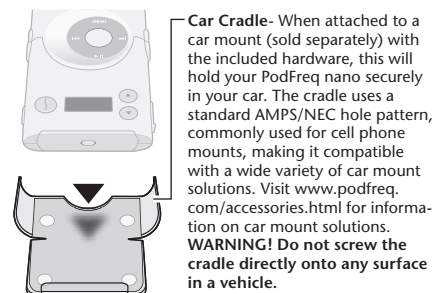
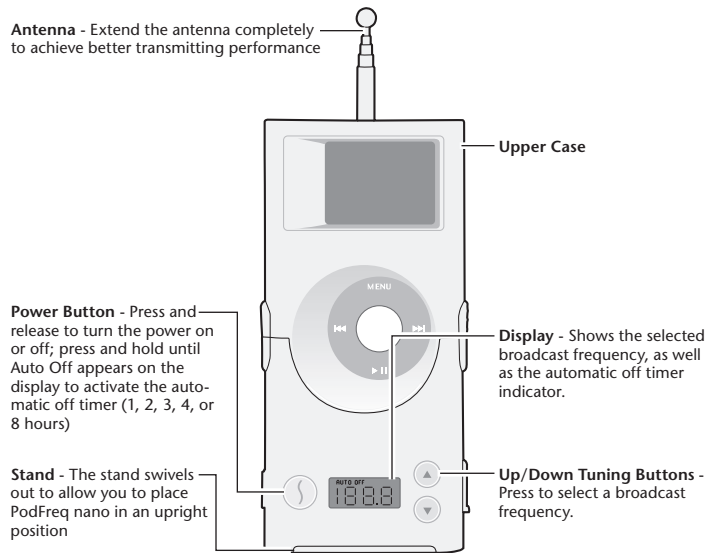
## User's Guide

Premium FM Transmitter + Dock +  
Protective Case for iPod nano

**SONNET™**  
SIMPLY FAST™

### Getting Started

This section describes the physical aspects of PodFreq nano.



### Introduction

This user's guide explains how to use PodFreq nano. PodFreq nano enables you to play your iPod nano's music and audiobooks on any nearby FM radio. It broadcasts on any frequency you choose (between 88.1 and 107.9 MHz) to an FM radio or tuner tuned to the same frequency. PodFreq nano incorporates mini-USB 2.0 and standard 6-Pin FireWire® ports in its design. Plug in the included USB 2.0 cable to transfer files between your computer and iPod nano, and charge it without removing it from PodFreq nano. You may also charge your iPod nano by connecting PodFreq nano to your computer with a FireWire cable (sold separately).

### Requirements

PodFreq nano's requirements are simple:

- Any iPod nano
- FM tuner (analog or digital, connected to an antenna)

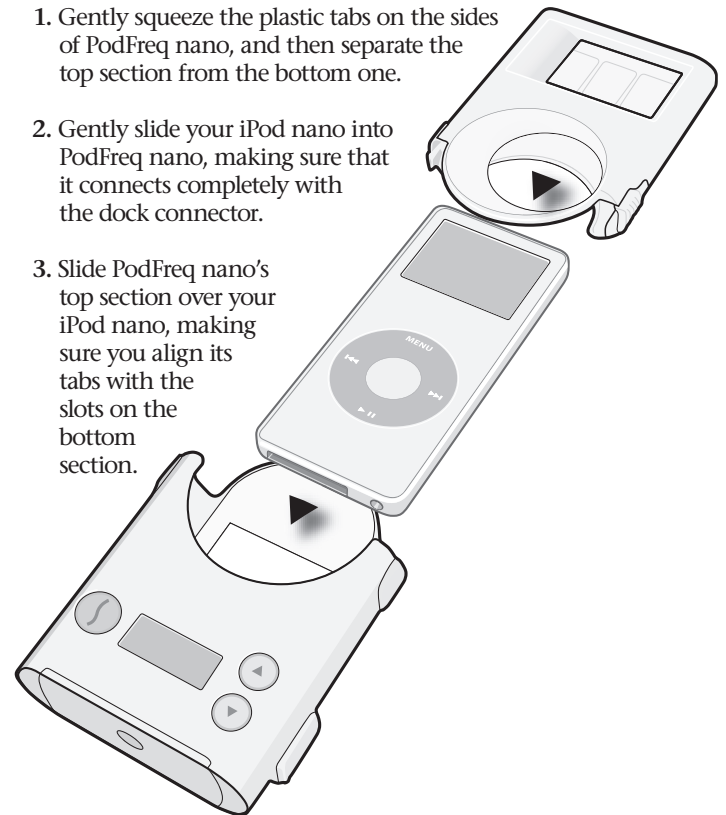
### Technical Specifications

Antenna	Telescoping, 8.6" (21.8 cm) when fully extended
Power Requirement	No batteries or power cables; powered by the iPod nano
Frequency Modulation	88.1 to 107.9 MHz
Tuning Type	Digital tuning, tunes in 0.1 MHz steps, last station recall
Stereo Separation	Greater than 40dB
Auto Level Control	Built-in to prevent sound distortion
Signal-to-Noise Ratio	Greater than 45dB (Stereo) 15 kHz LPF
Modulation Distortion	Less than 0.5%
Transmitter Range	10-35 feet (3-10.7 m), depending on FM receiver/antenna
Frequency Response	50 Hz to 15 kHz
Ports	Mini-USB 2.0 and 6-Pin FireWire
Dimensions (WxHxD)	2.36" x 4.75" x 1.18" (6 x 12.1 x 3 cm)

1

### A—Insert Your iPod nano into PodFreq nano

1. Gently squeeze the plastic tabs on the sides of PodFreq nano, and then separate the top section from the bottom one.
2. Gently slide your iPod nano into PodFreq nano, making sure that it connects completely with the dock connector.
3. Slide PodFreq nano's top section over your iPod nano, making sure you align its tabs with the slots on the bottom section.



3

2

## B—Find an “Empty” Station on the FM Band

Find an FM frequency between 88.1 and 107.9 on your radio or tuner’s FM band that has no radio station broadcasting on it, or when that’s not possible, find the one with the weakest radio station broadcast.

## C—Set Up PodFreq nano to Broadcast

1. Pull up the antenna on the back of PodFreq nano until it is fully extended.

2. Turn on PodFreq nano; there are two ways to do this:

- *Press and release the play button on your iPod nano; PodFreq nano’s power button and display backlight will light up for approximately 10 seconds, and then turn off. Please note, PodFreq nano turns on automatically along with your iPod nano. If there is no output from your iPod nano for five minutes, PodFreq nano will shut itself off.*

- *Press and hold the Power button until “Auto Off” appears on the display, followed by “1hr”, “2hr”, “3hr”, “4hr”, or “8hr”; release the button when you choose the number of hours you want PodFreq nano to remain on. The Power button light and display backlight will turn off 10 seconds after you first press the button.*



3. Using the Up and Down tuning buttons, tune PodFreq nano to the same frequency you chose on your radio. If the radio you are using has digital tuning, be sure to select the exact same number. Otherwise, the sound quality will be affected. For instance, the sound quality may be poor if you select 93.2 on PodFreq nano when your radio is tuned to 93.3.



4

## D—Play Your Music

Select your music as you would when you listen to your iPod nano through headphones, and then press play; you will hear the music through the radio. Because PodFreq nano uses the line level output signal from the iPod nano, its volume control will have no effect on the radio’s volume; adjust the volume on the radio.



**Support Note:** Unlike many other products, the iPod nano’s line level output signal is affected by its EQ settings. You may want to experiment with various EQ settings to achieve the best sound quality, as some settings which increase bass may introduce distortion; Sonnet recommends that the iPod nano’s EQ be set to Off.

## E—Turn Off PodFreq nano

When PodFreq nano is turned on automatically when you press play on your iPod nano, it will shut off five minutes after you stop your iPod. When you turn on PodFreq nano using the Auto Off timer, it shuts itself off automatically after the time you selected has elapsed. You may also press the Power button to turn off PodFreq nano manually.

## F—Connect PodFreq nano to Your Computer

PodFreq nano is a dock when you connect it to your computer with the included mini-USB cable. You can sync your iPod nano with iTunes, transfer files between your computer and iPod nano; your iPod nano’s battery will also charge while PodFreq nano is connected to your computer. You may charge your iPod nano through PodFreq nano’s FireWire connector (FireWire cable required, sold separately), but file transfer and iTunes sync features are not supported.

5

## Troubleshooting

Problem	What to Check
Power button and display backlight are not lit	To save power, the Power button’s light and display backlight shut off ten seconds after PodFreq nano turns on; this is normal operation.
Weak reception	<ul style="list-style-type: none"><li>• <i>Antennas</i> - Verify PodFreq nano’s antenna is fully extended, and if you’re using a portable radio, make sure its antenna is also fully extended.</li><li>• <i>Distance</i> - Try moving PodFreq nano closer to the radio. The effective transmitting range will decrease with distance; objects and walls between PodFreq nano and the FM tuner or radio’s antenna will also affect reception.</li><li>• <i>Radio station on the same frequency</i> - If there is a radio station broadcasting on the frequency you chose, reception will be affected; this is especially important to remember when you use PodFreq nano in a moving vehicle.</li><li>• <i>Strong adjacent radio station(s)</i> - The presence of a strong radio station on a frequency near the one you’ve chosen (problematic in and near larger cities) may cause interference; try selecting another frequency.</li></ul>
Distorted sound	<ul style="list-style-type: none"><li>• <i>Different tuning frequencies</i> - Verify that PodFreq nano’s broadcast frequency is the same as the one you chose on the FM tuner. If you are using an analog tuner, try fine-tuning the dial to hear clearer sound.</li><li>• <i>iPod nano EQ is on</i> - When any EQ setting other than Off is selected on iPod nano, especially any setting that increases the bass, the sound from iPod nano may be distorted. Unfortunately, this is normal, as the distortion may also be heard through the headphones; <i>this is an iPod nano issue.</i> Choose the EQ Off setting for the best sound quality.</li></ul>

6

## FCC Compliance

PodFreq nano complies with Part 15 of the FCC Rules. Operation is subject to the following two conditions: This device may not cause harmful interference, AND this device must accept any interference received, including interference that may cause undesired operation.

## Limited Warranty

Sonnet Technologies, Inc. warrants that this product shall be free from defects in materials and workmanship for a period of one year following the date of original purchase. For complete warranty information, go to [www.podfreq.com](http://www.podfreq.com).

## Contacting Customer Service

The Sonnet web site located at [www.sonnettech.com](http://www.sonnettech.com) has the most current support information and technical updates.

Before you call Sonnet Customer Service, please check our web site for the latest updates and online support files, and check this user’s guide for helpful information. When you call Sonnet Customer Service, have the following information available so our customer service staff can better assist you:

- Product name
- Date and place of purchase
- iPod model

If further assistance is needed, please contact us at:

### Sonnet Customer Service:

Tel: 1-949-472-2772

(Monday–Friday, 7 a.m.–5 p.m. Pacific Time)

Fax: 1-949-457-6350

E-mail: [support@sonnettech.com](mailto:support@sonnettech.com)

Online Service Form: <http://serviceform.sonnettech.com>

## Visit Our Web Site

For the most current product information and online support files, visit the Sonnet web site at [www.sonnettech.com](http://www.sonnettech.com). Remember to register your product online at <http://registration.sonnettech.com> to be informed of future upgrades and product releases.

©2006 Sonnet Technologies, Inc. All rights reserved. Sonnet, the Sonnet logotype, Simply Fast, the Simply Fast logotype, PodFreq, and the PodFreq logotype are trademarks of Sonnet Technologies, Inc. Macintosh, Mac, iPod, and iTunes are trademarks of Apple Computer, Inc., registered in the United States and other countries. Other product names are trademarks of their respective owners. Product specifications subject to change without notice. Printed in the USA. UG-FMT-IPOD-NANO-A-033006

7