

Podfreq[™] mini

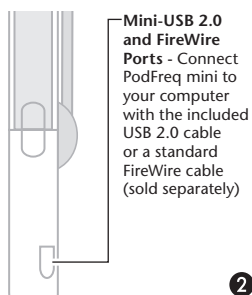
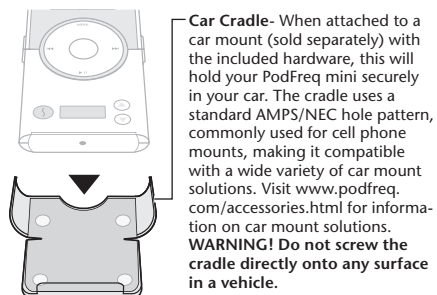
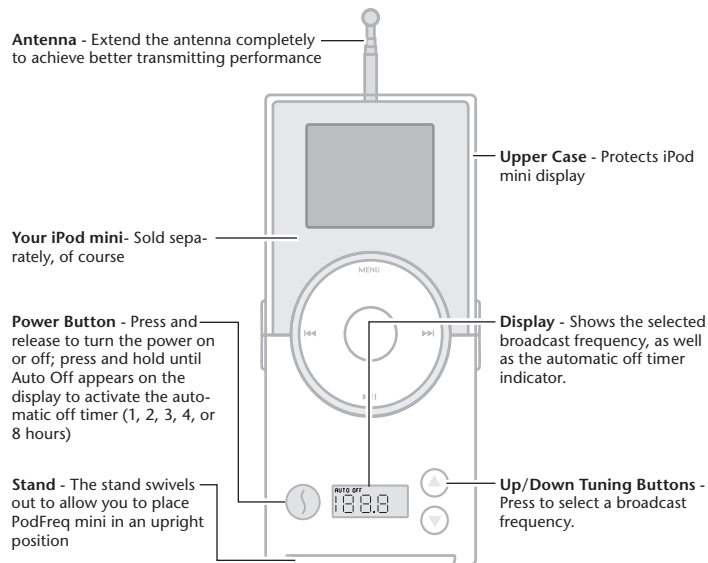
Premium FM Transmitter, Dock, and
Protective Case for iPod[®] mini

User's Guide

SONNET[™]
SIMPLY FAST[™]

Getting Started

This section describes the physical aspects of PodFreq mini.



Introduction

This user's guide explains how to use PodFreq mini, the premium FM transmitter, dock, and protective case for your iPod mini. PodFreq mini enables you to play your iPod mini's music on any nearby FM radio. It broadcasts the music on any frequency you choose (between 88.1 and 107.9 MHz) to an FM radio or tuner tuned to the same frequency. PodFreq mini incorporates mini-USB 2.0 and standard 6-Pin FireWire[®] ports in its design so that you may plug in the included USB 2.0 cable or a FireWire cable (sold separately) to sync files between your computer and iPod mini, and charge your iPod mini without removing it from PodFreq mini.

Requirements

PodFreq mini's requirements are simple:

- Any iPod mini
- FM tuner (analog or digital, connected to an antenna)

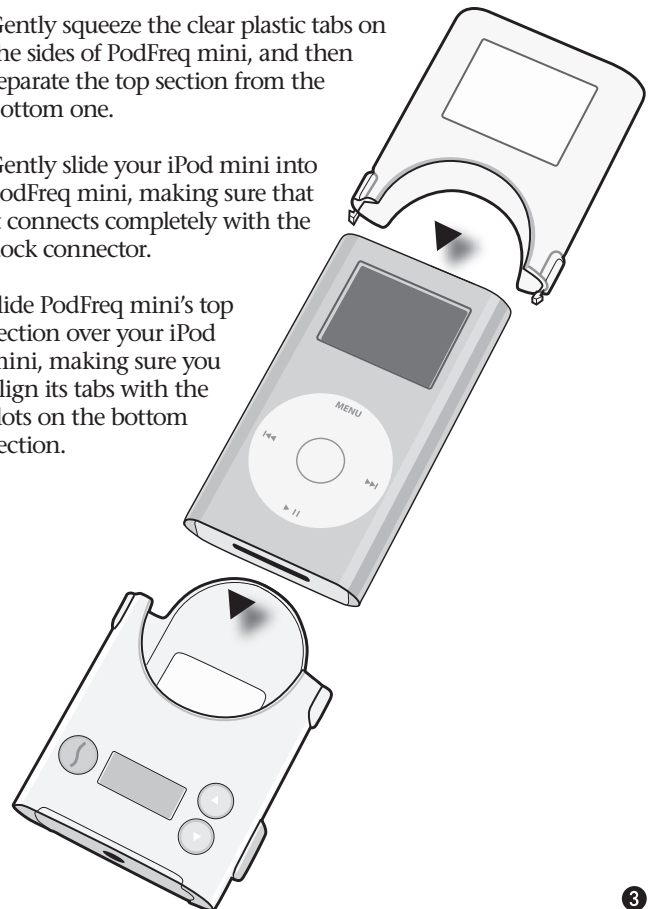
Technical Specifications

Antenna	Telescoping, 8.6" (21.8 cm) when fully extended
Power Requirement	No batteries or power cables; powered by the iPod mini
Frequency Modulation	88.1 to 107.9 MHz
Tuning Type	Digital tuning, tunes in 0.1 MHz steps, last station recall
Stereo Separation	Greater than 40dB
Auto Level Control	Built-in to prevent sound distortion
Signal-to-Noise Ratio	Greater than 45dB (Stereo) 15 kHz LPF
Modulation Distortion	Less than 0.5%
Transmitter Range	10-35 feet (3-10.7 m), depending on FM receiver/antenna
Frequency Response	50 Hz to 15 kHz
Ports	Mini-USB 2.0 and 6-Pin FireWire
Dimensions (WxHxD)	2.36" x 5" x 1.18" (6 x 12.7 x 3 cm)

1

A—Insert Your iPod mini into PodFreq mini

1. Gently squeeze the clear plastic tabs on the sides of PodFreq mini, and then separate the top section from the bottom one.
2. Gently slide your iPod mini into PodFreq mini, making sure that it connects completely with the dock connector.
3. Slide PodFreq mini's top section over your iPod mini, making sure you align its tabs with the slots on the bottom section.



2

3

B—Find an “Empty” Station on the FM Band

Find an FM frequency between 88.1 and 107.9 on your radio or tuner’s FM band that has no radio station broadcasting on it, or when that’s not possible, find the one with the weakest radio station broadcast.

C—Set Up PodFreq mini to Broadcast

1. Pull up the antenna on the back of PodFreq mini until it is fully extended.
2. Turn on PodFreq mini; there are two ways to do this:
 - *Press and release the play button on your iPod mini*; PodFreq Mini’s power button and display backlight will light up for approximately 10 seconds, and then turn off. Please note, PodFreq mini turns on automatically along with your iPod mini. If there is no output from your iPod mini for five minutes, PodFreq mini will shut itself off.
 - *Press and hold the Power button* until “Auto Off” appears on the display, followed by “1hr”, “2hr”, “3hr”, “4hr”, or “8hr”; release the button when you choose the number of hours you want PodFreq mini to remain on. *The Power button light and display backlight will turn off 10 seconds after you first press the button.*
3. Using the Up and Down tuning buttons, tune PodFreq mini to the same frequency you chose on your radio. If the radio you are using has digital tuning, be sure to select the exact same number. Otherwise, the sound quality will be affected. For instance, the sound quality may be poor if you select 93.2 on PodFreq mini when your radio is tuned to 93.3.



4

D—Play Your Music

Select your music as you would when you listen to your iPod mini through headphones, and then press play; you will hear the music through the radio. Because PodFreq mini uses the line level output signal from the iPod mini, its volume control will have no effect on the radio’s volume; adjust the volume on the radio.



Support Note: Unlike many other products, the iPod mini’s line level output signal is affected by its EQ settings. You may want to experiment with various EQ settings to achieve the best sound quality, as some settings which increase bass may introduce distortion; Sonnet recommends that the iPod mini’s EQ be set to Off.

E—Turn Off PodFreq mini

When PodFreq mini is turned on automatically when you press play on your iPod mini, it will shut off five minutes after you stop your iPod. When you turn on PodFreq mini using the Auto Off timer, it shuts itself off automatically after the time you selected has elapsed. You may also press the Power button to turn off PodFreq mini manually.

F—Connect PodFreq mini to Your Computer

When you connect the included mini-USB cable or a standard FireWire cable (sold separately) between your computer and PodFreq mini, PodFreq mini becomes a dock. You can sync your iPod mini with iTunes, transfer files between your computer and iPod mini—you can even operate your iPod mini when PodFreq mini is connected to your computer. Your iPod mini’s battery will charge while PodFreq mini is connected to your computer.

5

Troubleshooting

Problem	What to Check
Power button and display backlight are not lit	To save power, the Power button’s light and display backlight shut off ten seconds after PodFreq mini turns on; this is normal operation.
Weak reception	<ul style="list-style-type: none">• <i>Antennas</i> - Verify PodFreq mini’s antenna is fully extended, and if you’re using a portable radio, make sure its antenna is also fully extended.• <i>Distance</i> - Try moving PodFreq mini closer to the radio. The effective transmitting range will decrease with distance; objects and walls between PodFreq mini and the FM tuner or radio’s antenna will also affect reception.• <i>Radio station on the same frequency</i> - If there is a radio station broadcasting on the frequency you chose, reception will be affected; this is especially important to remember when you use PodFreq mini in a moving vehicle.• <i>Strong adjacent radio station(s)</i> - The presence of a strong radio station on a frequency near the one you’ve chosen (problematic in and near larger cities) may cause interference; try selecting another frequency.
Distorted sound	<ul style="list-style-type: none">• <i>Different tuning frequencies</i> - Verify that PodFreq mini’s broadcast frequency is the same as the one you chose on the FM tuner. If you are using an analog tuner, try fine-tuning the dial to hear clearer sound.• <i>iPod mini EQ is on</i> - When any EQ setting other than Off is selected on iPod mini, especially any setting that increases the bass, the sound from iPod mini may be distorted. Unfortunately, this is normal, as the distortion may also be heard through the headphones; <i>this is an iPod mini issue</i>. Choose the EQ Off setting for the best sound quality.

FCC Compliance

PodFreq mini complies with Part 15 of the FCC Rules. Operation is subject to the following two conditions: This device may not cause harmful interference, AND this device must accept any interference received, including interference that may cause undesired operation.

6

Limited Warranty

Sonnet Technologies, Inc. warrants that this product shall be free from defects in materials and workmanship for a period of one year following the date of original purchase. For complete warranty information, go to www.podfreq.com.

Contacting Customer Service

The Sonnet web site located at www.sonnettech.com has the most current support information and technical updates.

Before you call Sonnet Customer Service, please check our web site for the latest updates and online support files, and check this user’s guide for helpful information. When you call Sonnet Customer Service, have the following information available so our customer service staff can better assist you:

- Product name
- Date and place of purchase
- iPod model

If further assistance is needed, please contact us at:

Sonnet Customer Service:

Tel: 1-949-472-2772

(Monday–Friday, 7 a.m.–5 p.m. Pacific Time)

Fax: 1-949-457-6350

E-mail: support@sonnettech.com

Online Service Form: <http://serviceform.sonnettech.com>

Visit Our Web Site

For the most current product information and online support files, visit the Sonnet web site at www.sonnettech.com. Remember to register your product online at <http://registration.sonnettech.com> to be informed of future upgrades and product releases.

©2005 Sonnet Technologies, Inc. All rights reserved. Sonnet, the Sonnet logotype, Simply Fast, the Simply Fast logotype, PodFreq, and the PodFreq logotype are trademarks of Sonnet Technologies, Inc. Macintosh, Mac, iPod, and iTunes are trademarks of Apple Computer, Inc., registered in the United States and other countries. Other product names are trademarks of their respective owners. Product specifications subject to change without notice. Printed in China. UG-FMT-IPOD-MINI-052705

7