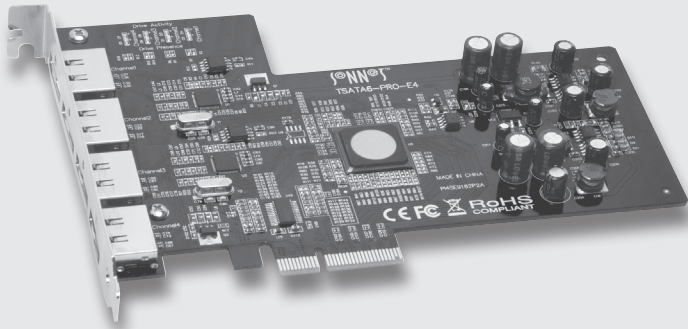


Tempo™ SATA Pro 6Gb 4-Port

6Gb/s eSATA PCIe 2.0 Host Controller for PCI Express® Slot



Quick Start Guide



Data cables with eSATA connectors are required for use with the Tempo card and drive enclosures. Bare SATA drives and some older drive enclosures use SATA I connectors; use of these devices with the Tempo card require cables with a SATA I connector on one end. SATA I to eSATA cables are available separately from Sonnet. **Figure 1** shows both eSATA and SATA I connectors.

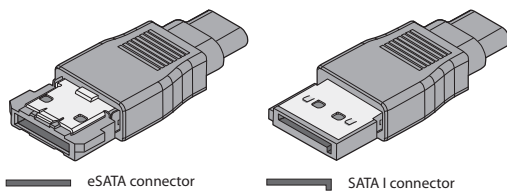


Figure 1

Hardware Installation Steps for All Users

1. Shut down your computer or Thunderbolt-to-PCIe expansion chassis, and then open it to access the expansion card area (PCI Express slots); refer to the user's manual for specific information.
2. Locate an available PCI Express slot and remove its access cover. Windows users and Thunderbolt-to-PCIe expansion chassis users skip to the next panel; Mac Pro users:
 - Mac Pro® (Mid 2012), Mac Pro (Mid 2010), Mac Pro (Early 2009) and pre-2008 Mac Pro users may install the card into any available slot; Mac Pro (Early 2008) users must only use slot 3 or 4.
 - Power Mac® G5 users should use slot 2 or 4, or slot 3 if necessary.

You Should Have

The following items should be included in your product package:

- One Tempo SATA Pro 6Gb 4-Port card

The following items are required (sold separately):

- One or more external Serial ATA drives
- One or more external Serial ATA (eSATA) data cables

System Requirements

The Tempo SATA Pro 6Gb 4-Port host adapter card requires the following in order to operate in your system:

- One available PCI Express 1.1 or 2.0 (PCIe) slot*
 - OS X® Version 10.5 or later; or Windows® 8, 7, or Vista®
- * This card is not currently compatible in PCIe 3.0 slots



Support Notes: We recommend that you make a backup of important information on your system's current hard drive prior to installing new hardware or software.

When handling computer products, you must take care to prevent components from being damaged by static electricity. Before opening your computer or removing parts from their packages, always ground yourself first by touching a metal part of the computer, such as a port access cover, and work in an area free of static electricity; avoid carpeted areas. Handle all electronic components only by their edges, and avoid touching connector traces and component pins. Also, avoid touching the logic board and any of its components.

Hardware Installation Steps for All Users (continued)

3. Remove the Sonnet card from its packaging, and then install it into the slot; **make sure the card is firmly seated and secured.**
4. Close your computer or Thunderbolt-to-PCIe expansion chassis.
5. Connect the eSATA data cable(s) between the Tempo card and the drive enclosures; **make sure all cables are connected securely to the Tempo card and the enclosures.**

Driver Information—OS X

The drivers that enable the Tempo SATA Pro 6Gb 4-Port card to work in your computer or Thunderbolt expansion chassis are installed as part of OS X; the Tempo card is ready to use when you power on your computer.

Driver Information—Windows

After starting up Windows, the drivers that enable the Tempo SATA Pro 6Gb 4-Port card to operate in your system are installed automatically. A *Found New Hardware* popup will appear. Then, information regarding the process of identifying the card, and searching for and installing the appropriate software will appear. Finally, the message "Your new hardware is installed and ready to use" will be displayed, and then the popup will disappear.

Using the Tempo Card—OS X Users

Listed here is some general information about using the Tempo card with your computer or Thunderbolt-to-PCIe expansion chassis:

- Before disconnecting cables from the Tempo card or attached drives, eject any mounted drive or volume by dragging its icon to the Eject icon in the Dock, or clicking its Eject button in a Finder window; otherwise, data may be corrupted.

Formatting Drives—OS X Users

Tempo SATA Pro 6Gb 4-Port supports one to four direct-connected drives, or up to 16 drives in enclosures with hardware RAID controllers. Use Disk Utility (found in the Utilities folder within the Applications folder) to set up connected drives for use.

Creating RAID Sets—OS X Users

Tempo SATA Pro 6Gb 4-Port features two SATA controllers, one each for the top two eSATA ports (ports 1 and 2), and one for the bottom two (ports 3 and 4). To obtain the best performance when using a striped RAID set (RAID 0) or mirrored RAID set (RAID 1), you should use drives connected to ports 1 and 3 together, and 2 and 4 together.

4

Using the Tempo Card—Windows Users

Listed here is some general information about using the Tempo card with your Windows desktop computer:

- Always shut down your computer and drives before disconnecting the drives or their cables from the Sonnet card.

Formatting Drives—Windows Users

Tempo SATA Pro 6Gb 4-Port supports one to four direct-connected drives, or up to 16 drives in enclosures with a hardware RAID controller. If you intend to format drives connected to the Tempo card using Windows drive formatting tools (Disk Management), you may locate the information by using “format volume”, and “create striped volume” as search items in Windows Help.

Creating RAID Volumes—Windows Users

Depending on which version of Windows you are using, you may be able to configure drives attached to the Tempo SATA Pro 6Gb 4-Port card in a striped (RAID 0) or mirrored (RAID 1) configuration to provide faster performance, or automatically mirrored data, respectively. Because the Tempo card features two SATA controllers (one each for the top two eSATA ports [1 and 2], and one for the bottom two [3 and 4]), you should use drives connected to ports 1 and 3 together, and 2 and 4 together, to obtain the best performance when using RAID volumes.

Booting From Attached Drives—Windows Users

Tempo SATA Pro 6Gb 4-Port supports booting from a single drive or drive volume when the card is installed in a PC running Windows 8 or 7. However, booting from a software-created RAID volume is not supported.

6

Booting From Attached Drives—OS X Users

Tempo SATA Pro 6Gb 4-Port supports booting OS X 10.6.8 and later from attached drives, including those configured as a RAID set, when installed in early 2008 and later Mac Pro computers and Thunderbolt-to-PCIe expansion chassis, as described below:

- All Tempo SATA Pro 6Gb 4-port cards support booting from attached drives when the card is installed in a Thunderbolt-to-PCIe expansion chassis.
- Installed in a Mac Pro (Early 2008 model and newer), revision B (serial number starts with B) and later cards support booting out of the box.
- Revision A cards may be updated to support booting when the card is installed in a Mac Pro (Early 2008 model and newer). You may obtain the software to update the card by visiting www.sonnettech.com/support/kb/kb.php, navigating to the Tempo SATA Pro 6Gb 4-Port support page, and downloading the firmware updater.

Please note that in some cases it may be necessary for you to hold the *option* key during a start or restart, and then select the startup disk attached to the Tempo card.

5

Limited Warranty

For complete warranty information, go to www.sonnettech.com/support/warranty.html

Contacting Customer Service

USA Customers

The Sonnet web site located at www.sonnettech.com has the most current support information and technical updates.

Before you call Sonnet Customer Service, please check our Website for the latest updates and online support files, and check this user's guide for helpful information. When you call Sonnet Customer Service, have the following information available so our customer service staff can better assist you:

- Product name
- Date and place of purchase
- Computer model

If further assistance is needed, please contact us at:

Sonnet Customer Service:

Tel: 1-949-472-2772

(Monday–Friday, 7 a.m.–4 p.m. Pacific Time)

E-mail: support@sonnettech.com

Online Service Form: <http://serviceform.sonnettech.com>

For Customers Outside the USA

For support on this product, contact your reseller or local distributor.

Visit Our Web Site

For the most current product information and online support files, visit the Sonnet web site at www.sonnettech.com. Remember to register your product online at <http://registration.sonnettech.com> to be informed of future upgrades and product releases.