

[Release Note of SxS Device Driver]

14/Jan./2022

SxS Device Driver Ver3.1.0 for Windows is released.

[Additional Items in Ver3.1.0]

- Support for M1 Mac with Apple Silicon

Note) When installing on Apple Silicon, it is necessary to change the Security Policy setting.

See below for details.

- Support for macOS 12.1 Monterey

[System Requirements]

The SxS Device Driver Ver. 3.1.0 for Mac has been tested under the following conditions.

Note) The Mac version is compatible with M1 Mac with Apple Silicon in addition to Intel Mac.

Supported OS:

macOS Monterey 12.1
macOS Big Sur 11.6
macOS Catalina 10.15.7

Memory:

4 GB or more

HDD (Free Space):

500MB or more

Note:

These test results may not apply to all computers.

[How to install the SxS Device Driver]

-Unzip [SxSDeviceDriver_3_1_0_mac.zip].

Open [SxSDeviceDriver_3_1_0_mac.dmg], and execute the install package.

Follow the on-screen instructions to install the SxS Device Driver.

Also, when installing, please allow the system software described later.

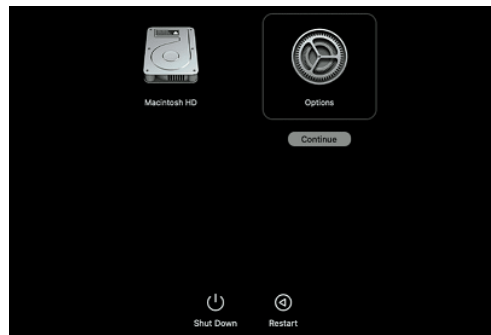
Please restart the OS after installation to ensure that the setting information is reflected.

-When installing on an M1 Mac with Apple Silicon, you need to change the security policy settings.

Before installing "SxS Device Driver" on a Mac equipped with Apple Silicon, follow the procedure below. You need to change the security policy setting to "Low Security".

1. On the Mac with Apple silicon, select [Shut Down] from Apple menu.
2. Press and hold the power button until you see "Loading startup options."

3. Click [Options], then click [Continue].

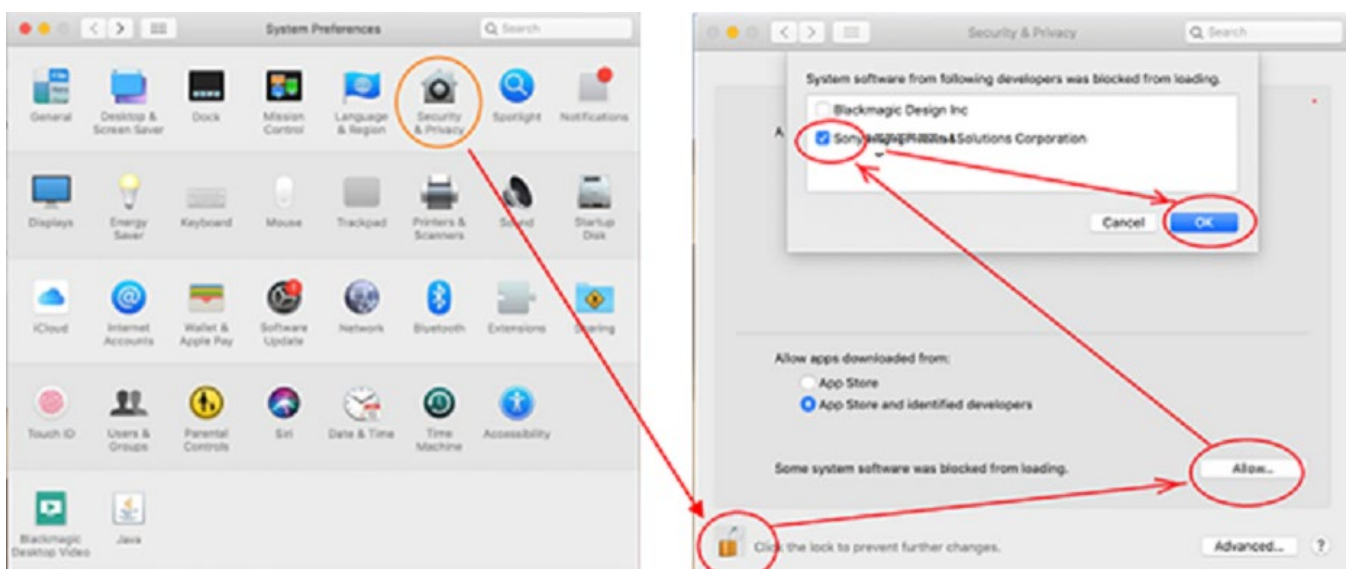


4. In macOS Recovery, if you are prompted for user selection, click [Next] and enter the password for an administrator account, if required.
5. In the Recovery Application, select [Startup Security Utility] from the [Utilities] menu.
6. Select the startup disk you want to use to set the security policy.
If the disk is encrypted with FileVault, click [Unlock], enter the password, then click [Unlock].
7. Click [Security Policy].
8. Select [Reduced Security], then select the [Allow user management of kernel extensions from identified developers] checkbox to allow installation of software that uses legacy kernel extensions and enter the password for an administrator account, if required.
9. Restart your Mac to apply the changes.

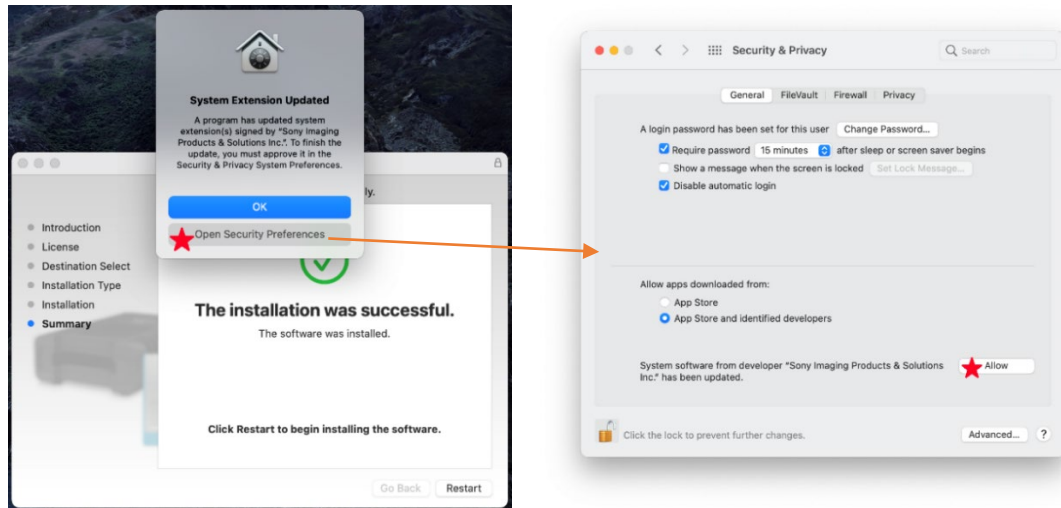
-Installing on macOS 10.15 or 11.6 or 12.1, be sure to "Allow" "Load system software".

Open the "Security & Privacy" screen of "System Preferences" as shown below, and be sure to "Allow" "Load system software" if read permission is required. Not required if it was already allowed during the previous installation, such as in an overwrite installation. However, if there are any new additions, please check them.

1. Open "Security & Privacy" from "System Preference" and
2. Press the "Allow" button on right side of "System Software was blocked from loading..."
3. Check out the System software of "Sony ***** Inc." and press "OK" .



If the following dialog is displayed during installation, select "Open Security Preferences". This will open the "Security & Privacy" screen. The following is an example for macOS Big Sur.



Note:

If you do not allow it during installation, it will return to its original state after restarting the OS. In that case, run the installer again and set the permission of the System software.

[Precautions for use]

-To use Memory Media Utility or a UDF formatted memory card:

If you want to use the Memory Media Utility or the functions related to UDF-formatted SxS memory cards, you need to install the SxS UDF Driver. Please download and install from Sony's web site.

<https://www.sonycreativesoftware.com/sxsudfdriver>

-Depending on the OS startup conditions, the Standard driver of OS may be applied instead of this product.

ex. When the OS is started while the SxS Reader/Writer with the UDF formatted SxS memory inserted is connected to the PC

When the Standard driver is applied, SxS Reader / Writer such as SBAC-T40 cannot be recognized by Memory Media Utility or the data transfer speed of the SxS memory is obviously reduced.

In this case, remove the SxS Reader / Writer from the PC and restart the OS.
